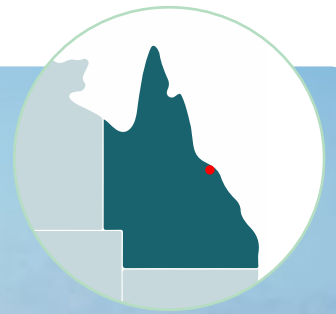


Whitsundays



Whitehaven Beach

The Whitsunday Region is a group of islands located off the coast of Queensland. The region is known for its stunning beaches, clear waters, and lush rainforests.

Contents

GETTING THERE.....	1
Proserpine.....	1
Airlie Beach.....	2
Shute Harbour.....	6
Whitsundays Airport.....	6
Whitsunday Islands.....	7
Bowen.....	9
SUGGESTED ITINERARIES.....	12
USEFUL LINKS.....	12

GETTING THERE

By Air

There are two major airports in the Whitsunday Region, Proserpine Airport (PPP) and Hamilton Island Airport (HTI). Flights are available from major cities in Australia, including Brisbane, Sydney, and Melbourne. There is no accessible transfers available from Proserpine to Airlie Beach. The best option for wheelchair users is the Hamilton Island Airport with Ferry Transfers to Airlie Beach, Daydream and Hamilton Islands.

By Car

If you're driving from Brisbane, take the Bruce Highway north to Proserpine, then turn right onto Shute Harbour Road and follow the signs to Airlie Beach. The drive takes approximately 12 hours.

Proserpine

Proserpine is a rural town located on the Bruce Highway, about 20 minutes inland from Airlie Beach and a major sugar producing town. The town has become a popular tourist destination, and it is now home to a variety of accommodation options, restaurants, and shops.



Lake Proserpine

Lake Proserpine

Lake Proserpine is a freshwater lake located 20 minutes west of Proserpine. It is the largest freshwater lake in the region, and serves as a popular recreation area for swimming, boating, fishing, camping, and birdwatching.

At the eastern end of the lake, there is a picnic ground, boat ramp and camping ground. The picnic areas have a jetty with ramped access, an accessible toilet, accessible picnic tables and an accessible BBQ.

Whitsunday Gold Coffee

Whitsunday Gold Coffee is a coffee plantation and roastery located in Proserpine on the Bruce Highway known for its high quality coffee. The plantation is also a popular tourist destination, with many people visiting the plantation to learn about the coffee-growing process and to sample the coffee. In addition to the coffee, the plantation has an extensive menagerie that can be explored through a self guided tour. There is designated disabled parking immediately in front of the main building that houses the café and gift shop. Ramped access is available to the left of the car park. Accessible toilets are available. The café has wide aisles and movable seating. The gift shop has wide entry doors and low level displays.

Airlie Beach

Airlie Beach is a coastal town located in the Whitsunday Region. It is situated approximately 1,100 kilometres north of Brisbane and 700 kilometres south of Cairns. Airlie Beach is a popular tourist destination and serves as the gateway to the Whitsunday Islands.

Airlie Beach is a compact town. The main street footpaths have been upgraded and are wide and smooth. Many of the shops and cafés along the main street still have steps at their entrances, and level entry. The lower foreshore esplanade provides access to the foreshore cafés which are all ramped or have level entry. There are several designated disabled parking spaces available along the main street and in the car



Airlie Beach Township



Airlie Beach Lagoon

park adjacent to the lagoon. Anyone displaying an authorised disabled parking sticker in their windscreen can park anywhere in Airlie Beach, including metered parking, free of charge for any duration.

Airlie Beach Lagoon

The Airlie Beach Lagoon was built as a way to provide a safe and accessible swimming area for tourists and locals. The lagoon is located on a raised breakwater, which protects it from the open ocean. The lagoon is man-made, but it is designed to look like a natural beach. The lagoon is a popular tourist destination, and it is also used by locals for swimming, sunbathing, and water sports. The lagoon is wheelchair accessible and has a number of facilities for people with disabilities, including:

- A wheelchair accessible pool with a shallow entry
- A hoist for getting in and out of the pool
- A ramp to access the pool with hand railing into the water
- A shaded area for people with disabilities to relax
- A beach wheelchair is available from the lifeguards
- Toilets and changing facilities that are accessible to people with disabilities

3 Little Birds Espresso

The 3 Little Birds Espresso and Creative Hub is located in Shute Harbour Road. The coffee shop offers a variety of coffee drinks, pastries, and light meals. The creative hub offers art classes and workshops for all levels. The doors to both the café and workshop are wide providing level access from the street.



Coral Sea Marina



Coral Sea Marina

Coral Sea Marina

Coral Sea Marina accommodates approximately 500 boats. It is split into two distinct precincts: north and south. The south precinct is home to the Coral Sea Resort Hotel, which offers luxury accommodation, dining, and spa facilities. It is also the main marina building which has the Boho Café which serves organic superfood bites, poke bowls, smoothies, and coffee. Berry and Maple Patisserie has freshly made cakes, pastries, sandwiches, and coffee. The south precinct also includes the Garden Bar Bistro which has stunning views and serves light meals, drinks, and live music. The north precinct is where most of the tourism operators and marine services are located, as well as the Coral Sea Marina Resort Village, which has a range of shops, cafés, bars, and restaurants. The Sorrento Bar and Restaurant has incredible views of the Whitsunday islands and serves woodfire pizzas, home-made pasta, and share platters and Le Kiosk Café offers hearty breakfasts and sandwiches.

All of the cafés and shops at the marina have wide doorways with level access straight off the footpaths. The south precinct has an upper level lounge which is serviced by a lift. The south precinct has designated disabled parking in front of the main building with level

access into the terminal building. The north precinct has only one disabled spot which is narrow. The two precincts are linked by a footpath leading around the back of the boat maintenance yard. Ocean Rafting and Red Cat Adventures operate from the north precinct. Whitsundays Jetski Tours and the Hayman Island ferry operate from the south precinct. There are accessible toilet facilities in both precincts.



Coral Sea Resort

Coral Sea Resort

The Coral Sea Resort is a boutique hotel located on the waterfront in Airlie Beach. It is a short walk from the town centre and the marina and offers stunning views of the Whitsunday Islands and the Coral Sea.

The resort has a variety of accommodation options, including rooms, suites, and apartments. All rooms have air conditioning, a private balcony or patio, and free WiFi. The resort also has a swimming pool, a spa, a fitness centre, and a bar and restaurant. The resort has one accessible room with full wet room bathroom including, a roll-in shower with fixed, fold-down shower seat and grab rails around the toilet. The room is located on the ground floor. Ramps connect the restaurant, pool and lounge areas. Accessible parking is available. There is a drop off zone in front of the main reception which is entered through self opening double glass doors. The resort is linked to the Coral Sea Marina by a wheelchair accessible boardwalk. The boardwalk has a tapping strip both sides to aide people with low vision.

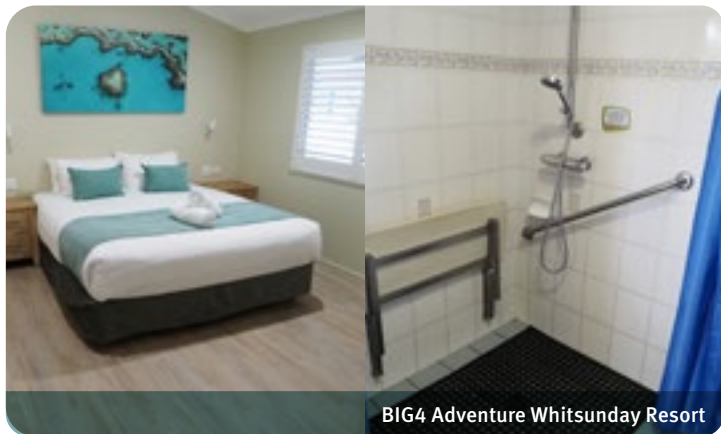
Airlie Beach Bicentennial Walkway

The Airlie Beach Bicentennial Walkway is a 3.7 kilometre waterfront walkway that meanders between the lagoon precinct in Airlie Beach at the Coral Sea Marina and the parklands at Cannonvale Beach. It is a popular spot for walking, jogging, cycling, and rollerblading and offers stunning views of the Coral Sea and the Whitsunday Islands. The walkway is well maintained and has a number of amenities, including water bubblers, benches, and lighting. There are also a number of art installations along the walkway, including sculptures



Airlie Beach Bicentennial Walkway

and murals. At the Canonvale Foreshore Reserve, there is designated disabled parking, accessible picnic tables and an accessible BBQ. Accessible toilets are also available. The paths are all wide concrete or wooden boardwalks. There are seats placed at regular intervals.

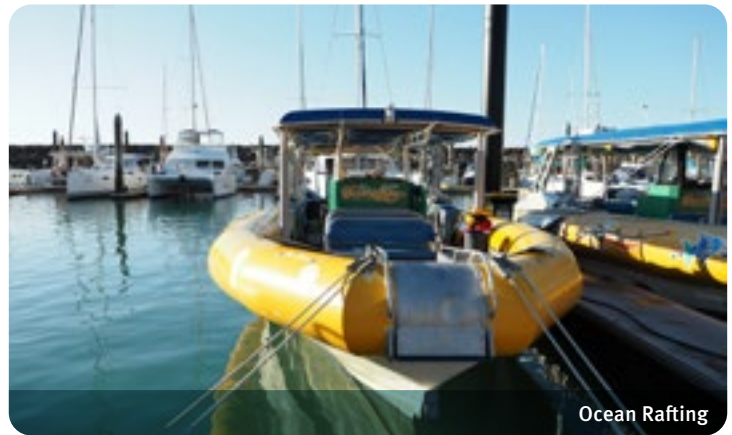


BIG4 Adventure Whitsunday Resort

BIG4 Adventure Whitsunday Resort

BIG4 Adventure Whitsunday Resort is a family-friendly resort located a 30 minute drive from the Whitsunday Coast Airport and is a great base for exploring the Whitsunday Islands and the Great Barrier Reef. It is in Cannonvale 10 minutes from Airlie Beach. The resort has a variety of accommodation options, including cabins, villas, and powered sites. The cabins are all air conditioned and have a kitchenette, while the villas have a private pool. The powered sites are perfect for those who are camping. The resort also has a number of facilities, including a swimming pool, playground, mini golf, water slides, animal park, game room, BBQ area, and free WiFi.

The park has a number of wheelchair accessible cabins including a new two bedroom family deluxe cabin. There are also accessible facilities in the main amenities block including a full wet room with toilet and shower with fixed fold down shower seat. The water park is zero depth and easily accessible. The main camp kitchen has access tables and easy to reach cooking appliances. The park also has a quiet room.



Ocean Rafting

Ocean Rafting

Ocean Rafting is a company that offers adventure tours in the Whitsunday Islands, including Whitehaven Beach and Hill Inlet, Northern Exposure, and Fly and Raft. Ocean Rafting is the only operator that can take visitors into Hill Inlet. Ocean Rafting's tours are all led by experienced guides. Ocean rafting operates from the Coral Sea Marina.

The fleet consists of inflatable fast ribs with either boarding over the side of the boat or through the front set of steps. The waters of the Whitsunday Passage can be rough, especially crossing the Whitsunday Passage. Some degree of trunk control and hand grip is required. The boats do have a small toilet on board. The room is small, has a 300 mm step to get over and has no handrails.

Red Cat Adventures

Red Cat Adventures is a charter boat company that provides tours around the Whitsunday Islands to Whitehaven Beach from Airlie Beach, including the Thundercat, Outer Reef Snorkeling Adventure, and Private Charter. The company's tours are all led by experienced guides. Red Cat Adventures operates from the Coral Sea Marina. Thundercat is the best option from an accessibility point of view. It has a wide side door that allows for wheelchair access. Seats can be removed to accommodate wheelchair users and there is a wide central aisle. Landing at the beach stops still requires the use of a front set of steps. There is a small toilet on board the boat.

Whitsunday Jetski Tours

Whitsunday Jetski Tours is a tour operator situated at Coral Sea Marina. They offer various tours, including Island Views (1.5 hours), Airlie Adventure (2 hours), Two Island Safari (3 hours), and Ultimate Island Trek (4 hours). These tours take you to stunning Whitsunday Islands, offering opportunities for snorkeling, exploring beaches, and observing marine life like sea turtles. All tours are guided, and participants must be at



Freedom Shores



Freedom Shores

least 16 years old. The jetskis are easily accessible for wheelchair users, with hand controls available for those with disabilities, and secure storage for wheelchairs at the self-launching dock.

Freedom Shores

Freedom Shores Airlie Beach is a boutique resort located in Cannon Valley, 10 kilometres from the Coral Sea Marina. It offers stunning views of the Whitsunday Islands and the Coral Sea. The resort has a variety of accommodation options, including bungalows, suites, and villas. The resort also has a number of facilities, including a swimming pool, restaurant, bar, spa, game room, library, BBQ area, and free WiFi.

Freedom Shores is also a popular choice for families and groups of friends. There is one accessible room at Freedom Shores located off the main reception area. There is a disabled parking spot available in the upper car park. There are ramps between the car park and reception and out onto the pool deck. The restaurant for Freedom Shores is the Northerlies Bar and Grill. It is a steep road down to the restaurant so it is advisable to drive down.



Northerlies Bar and Grill

Northerlies Bar and Grill

Northerlies Bar and Grill is a beachfront bar and grill located adjacent to Freedom Shores in Cannonvale. It is known for its casual atmosphere, delicious food, and stunning views of the Whitsunday Islands. The menu features a variety of seafood dishes, as well as burgers, steaks, and pasta dishes. The restaurant also has a wide selection of beverages.

The restaurant has designated disabled parking at the top of the car park. It is a short walk down an asphalt path to the main reception. A ramp leads up into the bistro. Accessible toilets are located to the right of the reception. The deck area is large and spacious with moveable chairs at every table. A ramp leads down to the outdoor area. The surface is grass over a sand base. Menus can be read from QR codes located on the corner of each table.

The Port of Airlie

The Port of Airlie, situated in Airlie Beach, is a bustling marina and port facility that serves as a vital gateway to the stunning Whitsunday Islands. The port offers berths and services for a variety of vessels, including recreational boats and ferries, making it a hub for maritime activities in the region, such as snorkelling, sailing and pristine beaches. It is now the key port for the inter-island ferry services between the Hamilton Island Airport, Hamilton Island and Daydream Island. Beyond its maritime offerings, Port of Airlie boasts accommodations, dining establishments, and shops in the adjacent retail precinct, making it a convenient and vibrant place for tourists to stay and enjoy waterfront views.

The terminal is spacious with ample room for people waiting for their ferry connections. There is an accessible toilet located within the terminal building. The transport hub outside has provision for wheelchair passengers with a set down area for the accessible bus network. The adjoining retail precinct has ramped access to the upper level shopping arcade from the marina front esplanade. Accessible toilets are located at the rear of the retail precinct. All shops in the precinct have level wide access.

Cruise Whitsundays

Cruise Whitsundays is a tour operator based in the Port of Airlie. They offer a variety of tours and experiences in the Whitsunday Islands, including day cruises to the Great Barrier Reef, sailing adventures, and island transfers. They also operate the Reefsleep and Reefsuites experiences, which allow guests to sleep on the Great Barrier Reef. They operate out of the Port of Airlie and Shute Harbour.



Cruise Whitsundays

The ferries are roll-on for wheelchair users at the Port of Airlie, Shute Harbour and Hamilton Island main terminal and Hamilton Island Airport. At Whitehaven Beach, passengers are required to use either the rear stairs onto a tender, or the front gangway to gain access to the beach. The front gangway requires the use of stairs out of the main cabin.

Shute Harbour

Shute Harbour is a small coastal harbour located 10 kilometres east of Airlie Beach and is a popular destination for boaters and tourists. The harbour is sheltered from the open ocean by Hook Island and provides a safe anchorage for boats. There are a number of boat charter companies operating out of Shute Harbour, and it is a popular starting point for exploring the Whitsunday Islands.



Shute Harbour Terminal

Shute Harbour Marina

Shute Harbour Marine Terminal is a marina and terminal located 10 minutes from Airlie Beach. It is a major gateway to the Whitsunday Islands and the Great Barrier Reef. The terminal has a number of facilities, including a jetty, a passenger terminal, a car park and a fishing jetty.

There is designated disabled parking immediately in front of the building. The terminal has accessible toilets and outside tables and chairs. The terminal is serviced by an accessible bus service from Airlie Beach. There is a small park at the end of the car park with a picnic shelter and BBQ.



Lions Lookout

Lions Lookout

Lions Lookout sits on the hill overlooking the Shute Harbour Marina. It offers a commanding view over the harbour. There is designated disabled parking and a concrete path leading to the observation pavilion. There is picnic table and an accessible drinking fountain but there are no toilet facilities.

Conway National Park Day Use Area

Located on the Shute Harbour Road is the Conway National Park Day Use area. It is a perfect spot for a quiet family picnic away from Airlie Beach. There is an accessible toilet and a BBQ. The circuit track is 1.2 kilometres. It is a natural earth track and while it is an easy gradient it does have obstacles and rocks imbedded in the path.



Whitsundays Airport

Whitsundays Airport

The Whitsunday Airport is located in Flametree, five kilometres up the coast from Airlie Beach. Also known as Shute Harbour Airport, it is a light aircraft airport that is primarily used for scenic flights and charter flights to the Whitsunday Islands.

The airport has an asphalt runway. The terminal has level access from the car park which has designated disabled parking. Entry to the terminal is through double glass self opening doors. An accessible toilet is located inside the terminal building.

All of the operators at the airport can accommodate travellers with a disability. Ocean Rafting, Air Whitsundays and Fly Australia operate fixed wing sightseeing tours. The aircraft types vary. Ocean Rafting and Air Whitsundays operation Cessna Caravans and Airvans. Both aircraft require a high lift into the aircraft for people who are unable to walk. Fly Australia has a Cessna 206 with double rear doors and a much lower height. People can maneuver a wheelchair right up to the aircraft for a transfer. A lifting platform would be a useful addition to the airport's ground handling equipment. Skydive Australia also operate from the airport. The Whitsundays is one of the few locations where Skydive Australia do not offer a harness

for people with limited mobility. The landing zones around the Whitsundays are all highly technical and not suitable for people with limited mobility. Airlie Beach Helicopters operate helicopter sightseeing and island transfers. They operate Robinson R44 helicopters and can assist with passenger transfers. As with all helicopter operations, passengers must be able to evacuate the helicopter without assistance in the case of emergency.

The Hangar Café & Bar

The Hangar Café and Bar is an airside café and bar located at Whitsunday Airport. It is a popular spot and is a great place to watch the planes take off and land. The café offers a variety of food and drinks, including breakfast, lunch, and dinner. The menu includes classic dishes such as burgers, pizzas, and salads.

The bar offers a wide selection of beers, wines, and spirits. There is also a coffee machine, so you can grab a coffee before or after your flight. It is accessed either from the car park or from the terminal building. The café is reasonably spacious with tables with moveable chairs. The accessible toilet is shared with the main terminal.

Cedar Creek Falls

Cedar Creek Falls is a beautiful waterfall located about 30 kilometres from Airlie Beach and 20 kilometres from Proserpine. The falls cascade over a series of rocks into a crystal-clear swimming hole. The best time to visit



Cedar Creek Falls dry season, runs from May to October. During this time, the water levels are lower and the water is clearer. The falls are also less crowded during the dry season. There is a short walk into the falls along a well graded path of hard-packed crushed rock. To get to the water's edge requires traversing small rocks. The falls can be viewed from the gravel path. The climb to the top of the falls is narrow, steep and rough. There is a small parking area with no designated disabled parking. There is an accessible toilet located in the car park at the start of the trail to the falls.

Whitsunday Islands

The Whitsunday Islands are an archipelago of islands located off the coast of Queensland. They are part of the Great Barrier Reef World Heritage Area and are a popular tourist destination. The Whitsunday Islands are known for their white sand beaches, clear blue water, and lush vegetation. The islands are also home to a variety of wildlife, including dolphins, turtles, and whales. The largest island in the Whitsundays is Whitsunday Island, which is home to the famous Whitehaven Beach.



Whitehaven Beach

Whitehaven Beach is a beach located on Whitsunday Island. It is considered one of the most beautiful beaches in the world known for its white silica sand. The water off Whitehaven Beach is a clear turquoise colour and is perfect for swimming, snorkelling, and sunbathing. The beach is also home to a variety of marine life, including turtles, dolphins, and fish. The Hill Inlet Lookout is the most popular lookout on the island and offers panoramic views of Whitehaven Beach, Hill Inlet, and the surrounding islands. The walk is 2.4 kilometres long and takes about 1 hour to complete. The walk is relatively steep and involves climbing continuous steps to reach the lookout. A reasonable level of fitness is required. There is an accessible toilet located about 100 metres from the beach on the lookout trail. It is step free, but a relatively soft sandy path. Access to the beach from the tour



Hamilton Island



Hamilton Island



Hamilton Island

operators involves either front gangplanks or tender transfers onto the beach. The very thing that makes the beach so attractive to visitors is also an obstacle to people with any form of mobility impairment, the incredible soft sand.

Hamilton Island

Hamilton Island is home to a variety of accommodation options, including hotels, resorts, and private villas. The island also has a number of restaurants, bars, and shops. It is a popular tourist destination, known for its white sand beaches, clear blue water, and lush vegetation. There are a variety of activities to enjoy on Hamilton Island, including swimming, snorkelling, diving, sailing, fishing, and golfing.

Hamilton Island Airport

The airport has one runway and up to the size of a Boeing 737 can be accommodated. The airport is located on the southern end of Hamilton Island and is about a 10 minute drive from the main tourist area.

Getting Around

Hamilton Island is a car-free island, with most visitors getting around by walking, cycling, or taking the shuttle bus. The shuttle bus is a free service that runs regularly between all the major locations on the island. The buses are wheelchair accessible with low floors and ramps. There are two shuttle bus routes on Hamilton Island: the Green Route and the Blue Route. The Green Route runs continuously between the Resort Centre and the Marina Village, stopping at the Whitsunday Apartments, Reef View Hotel, and the Ice Cream Parlour in the Marina Village. The Blue Route covers the entire island on a timed loop, stopping at the Resort Centre, One Tree Hill, qualia, Mango Tree Corner and Palm Valley.

Cats Eye Bay

Cats Eye Bay is a beautiful, curved beach on the resort side of Hamilton Island. It is a perfect spot for relaxing, swimming, and enjoying a range of watersports. The starting point is the resort centre. The resort centre is the central location for all of the popular island activities and facilities. It has an information and bookings desk. The centre has a family-friendly Main Pool with a swim-up pool bar. It has two restaurant offerings, Coca Chu and Sails Restaurant, as well as the Veranda Bar. There are several boutique shops located in the centre. The resort centre also offers entertainment options for the whole family. The shuttle bus stops in front of the centre. There are steps into the centre, but there is a ramp to the far left. Access to Sails is from the swimming pool deck. All of the retail outlets have wide doorways and level access. The pool has a raised pool edge and a block which allows for a stepped transfer into the pool. Access to the beach in front of the centre is by steps only. At the southern end of the centre, past the conference facilities, there is a concrete service ramp onto the beach. In front of the resort is the watersports centre where there are canoes, catamarans and stand up paddle boards for hire. There are no accessible equipment hire options available.

Along the front of the foreshore is a concrete, level path leading to the Beach Pavilion. It is a multi-purpose function centre. It has bifold doors and level access. Next to the pavilion are a series of change huts. The one closest to the beach is accessible with a toilet with side and rear handrails.

One Tree Hill

A highlight is the One Tree Hill Lookout located on the highest point on the island and offers panoramic views of the entire island, the Whitsunday Islands, and the Great Barrier Reef. It is a stop on the shuttle bus route and has a large asphalt apron area. The lookout section is raised, however, with a 250mm step onto the viewing platform.



Marina Precinct

The marina precinct on Hamilton Island is a lively and vibrant area that offers a range of facilities and services for boating enthusiasts and visitors. The marina has wet berths that can accommodate vessels up to 45 meters in length and provides access to power, water, fuel, and waste disposal. The marina precinct also features the Hamilton Island Yacht Club, which is an architectural landmark that hosts sailing events and functions. The precinct has many restaurants, bars, shops, and entertainment options in the marina village, such as the Marina Tavern, the Bommie Deck, the Hamilton Island Bakery, and the Hamilton Island Art Gallery.

The marina precinct has a level and wide promenade that allows easy access from the ferry terminal right around to the yacht club on the breakwater. There is a further hard packed gravel path that ends at the end of the breakwater giving a great view of approaching aircraft landing. Many of the buildings have stepped front entrances. Accessible cafés include the Marina Café, the Pizzeria, Romanos, Popeyes Fish and Chips, the Bakery and the Yacht Club.

Hayman Island

Hayman Island accommodation includes the 5-star luxury InterContinental Hayman Island with guest rooms, suites, and villas, all of which offer stunning views of the island and the Great Barrier Reef.

Hayman Island operates their own ferry for transfers to and from the Island. The ferry is spacious and roll on at the docks at Hayman Island and Hamilton Island. The departure from the Coral Seas Marina in Airlie Beach involves the use of steps. Given that there are no accessible transfers from Proserpine Airport, wheelchair users should plan to use Hamilton Island as their preferred entry point for a Hayman Island visit. Transfers are made from the dock to the main resort reception. There are accessible routes throughout the resort and into all restaurants, bars and retail outlets. The pool has ramped access into the water. Accessible toilets are available in the public resort spaces. The resort has four wheelchair accessible rooms, two in each wing. Additional activities are available. At the watersports centre, there are canoes available with high backed seats. The game fishing boat has a wide rear door and loading platform that allows direct access by wheelchair users. The traditional sports centre has level access to the playing surfaces for tennis, table tennis and the gaming consoles. Direct beach access is available next to the beach sports centre.

Bowen

Bowen is a town in the Whitsunday Region located on the coast of the Coral Sea, about 70 kilometres north of Proserpine. The town is known for its beautiful beaches, fishing, and sugarcane farming. Bowen is also a popular destination for whale watching, as humpback whales migrate past the town each year. The town has a number of shops, restaurants, and bars.

Flagstaff Hill

Flagstaff Hill is a lookout just behind the township of Bowen. It offers panoramic views of the Whitsunday Islands, Coral Sea, and Bowen hinterland. The hill is a popular tourist destination and is a great place to watch the sunset. The park has a number of facilities, including a café, a souvenir shop, and a children's playground.





Flagstaff Hill

There is designated disabled parking in front of the main café building. The car park is asphalt. There is a concrete ramp that leads to the main observation rotunda. There are a series of hard packed gravel pathways that lead to various vantage points. A concrete path leads to the café which is entered through wide self opening doors. There is an accessible toilet at the café.

Bowen Soundshell

The Bowen Soundshell is a public performance venue located overlooking the Bowen River and the Coral Sea. It is used for a variety of events, including concerts, festivals, and community events. The seating area is lawn with easy access from the car park. There is designated disabled parking and an accessible toilet behind the stage area. The stage has ramped access.



Bowen Jetty

Bowen Jetty

The Bowen Jetty is a historic wharf extending approximately 750 meters into the waters of Port Denison.

It is a popular tourist destination and is a great place to go fishing, crabbing, or simply enjoy the views. There is also a café located at the end of the jetty.

The Bowen Jetty is undergoing restoration, and will add new facilities, such as a boardwalk and an observation deck. The jetty has level access from the esplanade and an observation deck at the shoreline. The initial

park of the jetty is concrete. The section under repair has a smooth timber boardwalk on the left hand side with colour contrasting edge markings. The nearest accessible toilet is at the Soundshell, 50 metres away.

Bowen Historical Museum

The Bowen Historical Museum is dedicated to preserving and interpreting the history of Bowen and the surrounding region. The museum has a collection of over 10,000 objects, including photographs, documents, artefacts, and artworks. The museum has a number of permanent exhibits, including the Pioneer's Gallery, Shipping Gallery and Town and Country Gallery.

Parking is available in front of the museum. There is a metal ramp over the gutter and a concrete path leading to the front of the building. There is a small step leading to the ramp to the main door. The museum has a portable ramp inside to allow access over the step and there is a bell on the outside of the building to ring for assistance. The museum has a wide door leading into the lower level. The upper level is reached by climbing a short staircase or by exiting the building and re-entering through the side door towards the back of the building. There are no accessible toilets located at the museum.



The Grandview Hotel

The Grandview Hotel

The Grandview Hotel is a pub located on the waterfront, overlooking the Bowen River and the Coral Sea. The Grandview Hotel is a popular watering hole for locals and tourists and has a wide range of facilities, including a bar, restaurant, bistro, function rooms, and a bottle shop.

Parking is available in the street with one designated disabled parking spot in Dalrymple Street. Level entry to the hotel is available through the gaming lounge or the beer garden. Accessible toilets are available behind the reception counter. All dining spaces are well laid out with wide aisles and movable seating.

Birds Fish Bar

Birds Fish Bar is a seafood restaurant located on the waterfront, overlooking the Bowen River. It has a casual dining atmosphere and offers a wide variety of seafood dishes, including fish and chips, seafood platters, and seafood chowder. Parking is available directly in front of the restaurant or across the road. There is no designated disabled parking. Entry is through a wide sliding door. Seating is available inside. The furniture is movable. The fish available is in low glass fronted cabinets. There is no accessible toilet available.

Arabon Seafoods

Arabon Seafoods is a seafood market located at the Boat Harbour and offers a wide variety of seafood, including fish, prawns, crabs, and scallops. The seafood is sourced from local fishermen. For fishermen, Arabon also has a large selection of bait.

Parking is available opposite the store. Entry is via double glass self opening doors. All the available seafood is displayed in low level glass fronted display cabinets.



Horseshoe Bay

Horseshoe Bay

Horseshoe Bay is a popular tourist destination, known for its beautiful white sand and clear turquoise waters. The bay is a popular spot for swimming, snorkelling, and fishing. Horseshoe Bay is located at the southern end of Bowen and is sheltered by two granite headlands. This makes the bay a safe place to swim, even for young children. The water is also relatively shallow, making it ideal for snorkelling and exploring the underwater world. There are a few amenities at Horseshoe Bay, including a café, a kiosk, and a public toilet. There is also a boat ramp.

There is designated disabled parking in the car park next to the boat ramp. There is a playground with a rubberized surface and a basket swing. Accessible toilets are available. Beach access is available next to the boat ramp.



Rose Bay

Rose Bay

Rose Bay is located about 5 kilometres from the town centre of Bowen. It is a sheltered bay, with calm waters and white sand beaches. The bay is also home to a variety of marine life, including fish, turtles, and dolphins. There are a few amenities at Rose Bay, including a public toilet, a picnic area, and a boat ramp. There is also a small café located near the boat ramp. There is designated disabled beach access next to the Rose Bay Resort. There are no steps but the path to the beach is across soft sand. The beach is shallow and well protected.



Queens Beach

Queens Beach

Queens Beach is a beach located 6 kilometres north of Bowen. The beach is known for its white sand and clear waters. It is a popular spot for swimming, sunbathing, and fishing. The beach is also well-maintained, with plenty of parking and amenities, such as public toilets, showers, and a playground. The beach is patrolled by lifeguards during the summer months, making it a safe place to swim. The water is also relatively shallow, making it ideal for families with young children. Beach access is across a series of soft sand tracks. The picnic tables in the foreshore park are not accessible.

SUGGESTED ITINERARIES

5 Days For The Family In Airlie Beach

- **Day 1:** Take a morning drive to the Cedar Creek Falls. Cool off in the afternoon at the Airlie Beach Lagoon.
- **Day 2:** Take a drive to Bowen taking in the view from Flagstaff Hill. Have fish and chips for lunch from the Birds Fish Bar before relaxing for the afternoon on the beach at Horseshoe Bay.
- **Day 3:** Take a full day combination cruise spending the morning on Hamilton Island exploring Cats Eye Bay and One Tree Lookout before an afternoon at Whitehaven Beach.
- **Day 4:** Visit Lake Proserpine for some fishing before visiting the menagerie at the Whitsunday Gold Coffee Plantation.
- **Day 5:** Take an art class at 3 Little Birds Espresso in the morning. Spend the afternoon exploring the Bicentennial Walkway.

Try Some Fishing

- **Lake Proserpine**
Head to Lake Proserpine, 26 kilometres inland from Proserpine. It is considered one of Australia's premier barramundi impoundments.
- **Shute Harbour Jetty**
The Shute Harbour Marine Terminal Fishing Pontoon is a great opportunity to catch fish without needing a boat.
- **Bowen Town Jetty**
The jetty offers a good variety of fish including species like pilchards, mackerels, travellies, and coral trout.

USEFUL LINKS

- Tourism Whitsundays** www.tourismwhitsundays.com.au
- Whitsunday Coast Airport** www.whitsundaycoastairport.com.au
- Hamilton Island Airport** www.hamiltonisland.com.au/getting-here/airport
- Cruise Whitsundays** www.cruisewhitsundays.com
- Lake Proserpine** www.whitsundayrc.qld.gov.au/lake-proserpine
- Whitsunday Gold Coffee** www.whitsundaygold.com
- 3 Little Birds Espresso** www.3littlebirdsespresso.com.au
- Coral Sea Marina** www.coralseamarina.com
- BIG4 Adventure Whitsunday Resort** www.adventurewhitsunday.com.au
- Ocean Rafting** oceanrafting.com.au
- Red Cat Adventures** redcatadventures.com.au
- Whitsunday Jetski Tours** jetskitour.com.au
- Freedom Shores** www.freedomshores.com.au
- Northerlies Bar and Grill** www.northerlies.com.au
- Shute Harbour** www.shuteharbourmarine.com.au
- Whitsunday Airport** www.whitsundayairport.com.au
- Hamilton Island** www.hamiltonisland.com.au
- Intercontinental Hayman Island** haymanisland.intercontinental.com
- Bowen Tourism** www.tourismbowen.com.au



Accessible Holiday Destination Guides have been developed by TravAbility for the Queensland Government's Department of Tourism and Sport.

